



elomi

Live Limitless

APRIL - DECEMBER 2023

LINGERIE UP TO A KK CUP



Notes from the designer

“AT ELOMI, WE PRIDE OURSELVES IN DESIGNING COLLECTIONS THAT CHALLENGE MISCONCEPTIONS OF WHAT A SUPPORTIVE BRA LOOKS LIKE – THERE IS NO NEED TO COMPROMISE FUNCTION OVER FASHION, OUR PRODUCTS DO IT ALL!”

This season, we mused over the sheer power of nature’s core elements and the awe-inspiring colours and formations that occur as a consequence of this, from oil-slick inspired Matilda Siren Song, to the intense lava-like tone of Kendra Cherry.

We introduce Carrie in Ballet Pink, using precision print technology to create multi-coloured realistic flower embroidery. This collection draws inspiration from the rise of modern-day Regency looks and maximalism.

New lace range Kendra features a super-soft ‘love letter’ lace in the cups and centre front. Available in continuity Black and eye-catching Cherry, with lacy co-ordinates, Kendra provides drama and comfort – a winning combination!

Tried, trusted and loved, Sachi returns in a party mood, with oh-so-cute embroidered hearts in shades of vibrant pink in our Red Confetti colourway.

No Elomi season would be complete without Matilda and for AW23 we have two new colourways, playful Wild Cherry, as well as shimmers of aqua blues and deep petrol in Siren Song.

We guarantee you’ll love these collections just as much as we do. So as always, look great, feel great and let Elomi support you through it all.



LIESL GOODMAN
HEAD OF DESIGN



CONTENTS

AW23 COLLECTION

SEASONAL HIGHLIGHTS	30
BRA SHAPES EXPLAINED	26
MERCHANDISING	29
BRIANNA	46
CATE	32
CARRIE	42
CHARLEY	39
ENERGISE	56
KENDRA	44
LUCIE	52
MATILDA	36
MORGAN	34
NAMRAH	38
PRIYA	54
SACHI	50
SMOOTH	48



CONTINUITY

BIJOU	58
DOWNTIME	58
KELSEY	59
KINTAI	60
MOLLY	59
OUR POS	61



LIVE LIFE TO THE

Full

**FOR THE FULLER FIGURE
UP TO A KK CUP**

Be bold. Be beautiful. Be free. Elomi Lingerie's gorgeous designs and flattering styles give you what you need to live life to the full.







EL8900 / EL8907

MATILDA

Wild Cherry

LUCIE

Black



ELOMI LINGERIE

EL4490 / EL4496

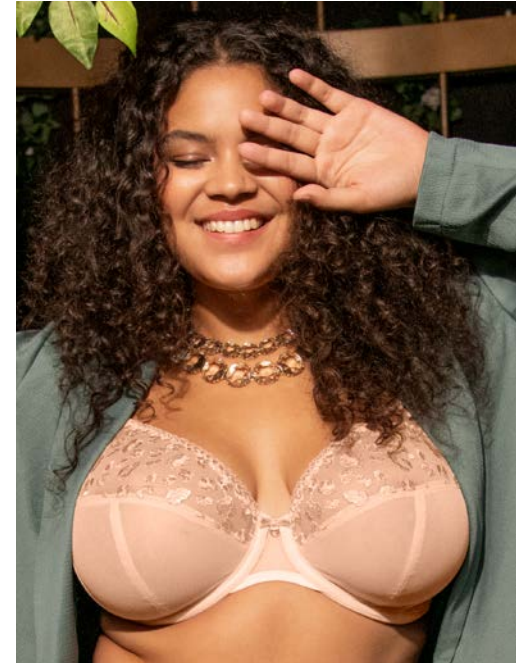
EL4030 / EL4036



CATE
Willow



EL301336 / EL301353



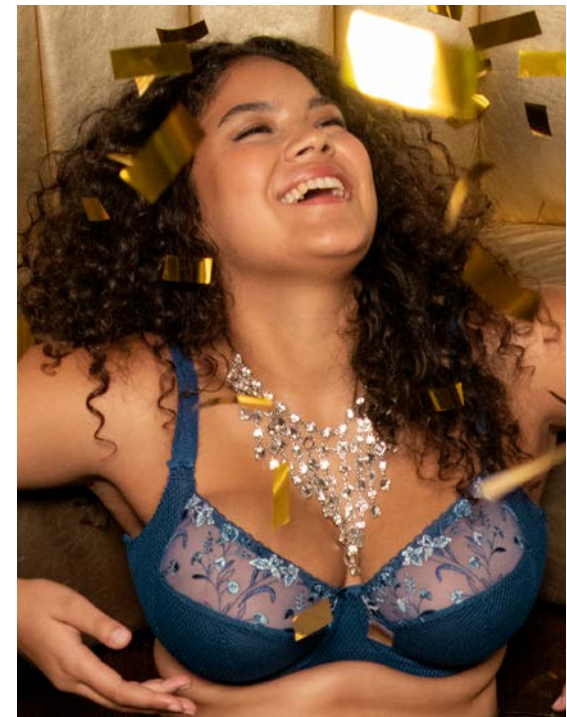
ELOMI LINGERIE

NAMRAH

Pale Blush



EL4380 / EL4388



CHARLEY
Petrol

CARRIE

Ballet Pink

ELOMI LINGERIE

EL301802 / EL301853

KENDRA

Black

EL301602 / EL301651



KENDRA

Cherry



EL301602 / EL301670



BRIANNA

Blackberry

EL8080 / EL8087



EL8900 / EL8906

MATILDA

Siren Song



SACHI

Red Confetti



EL4353 / EL4354

EL4490 / EL4496



LUCIE

Rock 'n' Rose



ELOMI LINGERIE



EL4550 / EL4555

PRIYA
Storm



EL4030 / EL4036

ELOMI LINGERIE

CATE
Berry

A woman with curly hair is lying on a green, tufted sofa. She is wearing a black one-piece swimsuit with a pink and white floral pattern and lace detailing. She is also wearing a silver choker and black high-heeled sandals. Her right arm is raised behind her head, and her left arm is resting on the sofa. The background is a wall covered in moss and various tropical plants, including orchids and large green leaves. Pink rose petals are scattered on the sofa and the floor.

MORGAN

Watercolour

EL4110 / EL4116

ENERGISE

Stormy Haze



ELOMI LINGERIE

EL8042

NAMRAH

Tet



EL301336 / EL301353

AW23 COLLECTION

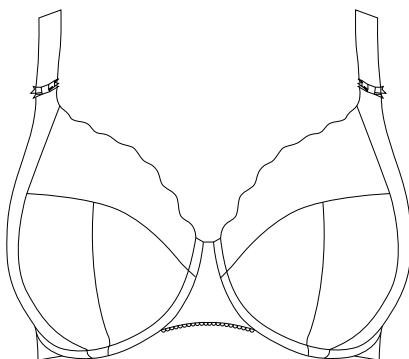
GO ALL
Out



LOWEST Coverage

Offering the lowest level of coverage across our collection are our plunge frames - featuring a low centre front for a plunging neckline without push up. Our bestselling UW Plunge Bra is featured in many of our best loved styles such as Matilda and Brianna. Don't miss the UW Plunge Bra - Stretch, this frame features a powerful stretch top cup which is great for accommodating varying fullness in the breasts.

UW BANDLESS PLUNGE BRA



- Based on Matilda plunge
- Bandless frame
- Offers less coverage with no fabric under the cup, preventing roll-up
- Elasticated neck edge for ease of fit
- Soft fold-over elastic overlay on the bottom edge of gore for all-day comfort

FIND HERE: Namrah

UW PLUNGE BRA



- Banded underwire frame
- Offers less coverage with a low centre front
- Stretch neck edge for ease of fit
- Powernet wing provides anchorage and support

FIND HERE: Carrie, Kendra, Kintai,
Brianna, Charley,
Matilda, Priya & Sachi

UW PLUNGE BRA-STRETCH



- Banded underwire frame
- Offers less coverage with a low centre front
- Top cup cut from powerful stretch lace for a rounded shape and ease of fit
- Powernet wing provides anchorage and support

FIND HERE: Charley & Lucie

UW BRA



- Banded underwire frame with three section cup plus side support panel for forward shape
- Top cup cut from powerful stretch lace or fabric, for a rounded shape and ease of fit
- Powernet wing provides anchorage and support

FIND HERE: Kintai, Morgan & Molly

MEDIUM *Coverage*

BRA SHAPES *Explained*

Elomi bra styles old and new can be found among our medium coverage offerings. We have everything from our classic UW Bra shape that features a cut-and-sew three section cup with added side support panel, to our UW Moulded Spacer Bra that features a light and breathable moulded cup for a rounded smooth profile. We have two Bralettes for you to choose between - both very different in their appearance. Our Charley Bralette is based on our UW Plunge Bra but with a stretch lace overlay that extends beneath the cradle into a feminine longline style, while Kelsey is inspired by the sports-luxe trend, and has the aesthetic of a crop top, with all the support of a concealed inner Matilda frame bra.

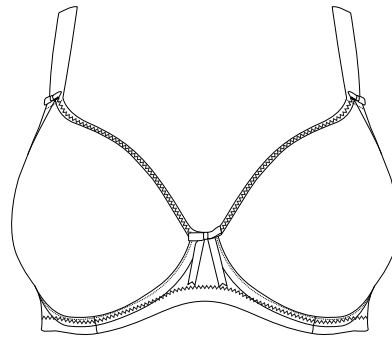
UW MOULDED SPACER BRA



- Offers rounded smooth profile
- Spacer mould is breathable and comfortable while offering good support
- Full in cup but lower at underarm to prevent wire dig, and bandless design has less fabric under the cups to prevent rolling on shorter upper torsos

FIND HERE: Charley

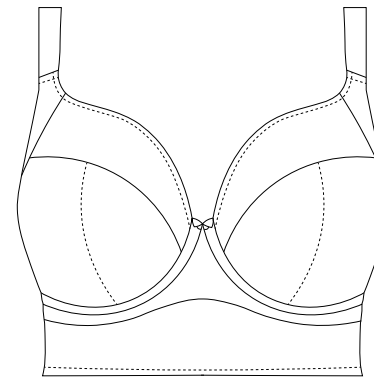
UW MOULDED BRA



- Non-stretch, moulded cup
- Seamless cup offers a rounded smooth profile
- Banded underwire frame
- Fold-over elastic at the underarm and neck edge for comfort

FIND HERE: Smooth & Bijou

UW BRALETTE



- Three section cup plus side support panel for forward shape
- Longline shape
- Low centre front gives plunge without push up
- Stretch lace overlay on cradle and wing has no bones and is loose to avoid rolling

FIND HERE: Charley

UW BRALETTE



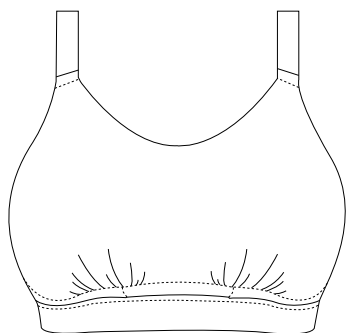
- Inner plunge bra based on Matilda is Café Au Lait coloured to make the inner bra disappear against the skin
- Outer stretch sheer lace layer for a sports-luxe look
- Soft fold-over elastic for comfort
- Darted outer layer conceals the seams of the inner bra, so it functions as a T-shirt bra

FIND HERE: Kelsey

HIGHEST Coverage

Our highest coverage category includes our Downtime Non-Wired Bralette, which truly champions comfort with its soft styling and crop top aesthetic. Best-selling Cate, with its three-section cup and higher centre front, is designed to fully encapsulate the breasts, and distribute the bust weight, while our Soft Cup Bra - that sits within the Cate family too - has a similar cup shape to the UW Bra, without a wire, but with the addition of a wide elastic underband for good anchorage. And that just leaves our UW Sports Bra, which provides maximum coverage and firm hold for complete support when you need it most.

NON WIRED BRALETTE



- The cup features three separate layers, including outer and inner comfort layers, and a concealed lining for shape and support
- Concealed support layer is a strong yet lightweight stretch fabric, with darts to create capacity
- Soft gathers under the bust to create cup capacity
- Powermesh lining for anchorage and support

FIND HERE: Downtime

UW BRA



- Full cup frame and cup shape offers full coverage
- Three section cup plus side support panel for forward shape, uplift and separation
- Stretch neck edge for ease of fit
- Powernet wing provides anchorage and support

FIND HERE: Cate

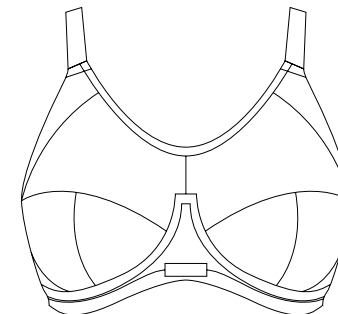
SOFT CUP BRA



- Non-wired shape
- Wide elastic band and V-shape to prevent rolling
- Restricted stretch straps to give bust a firm, even lift
- Flexible side boning for anchorage and support
- Three section cup and side support panel for forward shape and uplift

FIND HERE: Cate

UW SPORTS BRA

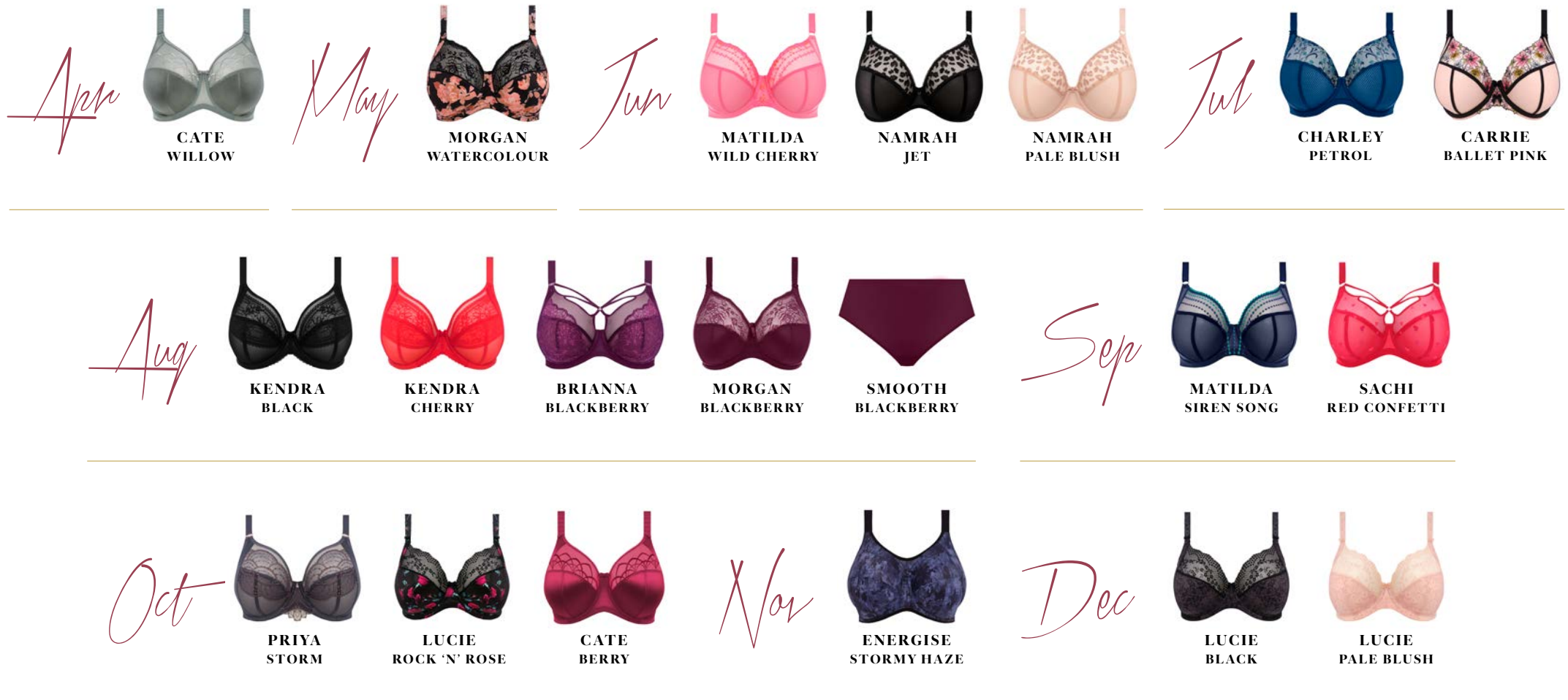


- Four section cup
- Unique non-compression technology means breasts are encapsulated in the cup offering support and shape
- Fabric features moisture wicking properties keeping you cool and dry

FIND HERE: Energise

Merchandising

When it comes to colours and prints, make the most of Elomi Lingerie in-store this season. We plan the release dates of our seasonal collections with you, the retailer, in mind so you can show your customers there are many ways to wear and feel great in Elomi.



TAKE YOUR LINGERIE TO THE *Next Level*

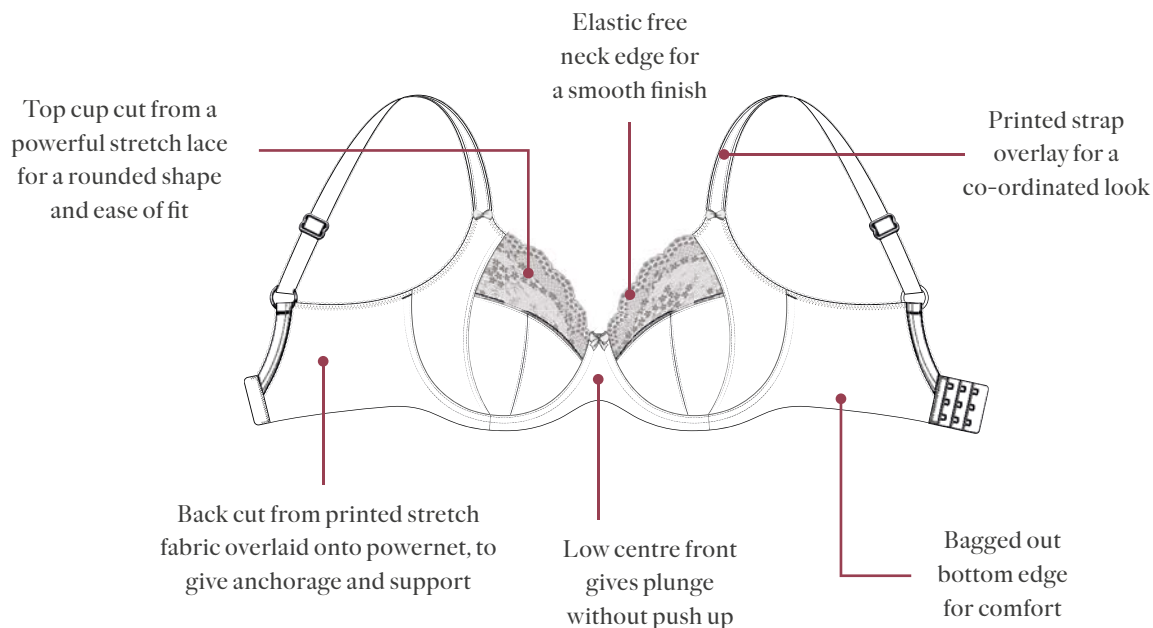
Lucie

Lucie started life as a fun and fashionable printed range. It has developed a following due to the fantastic fit and forward rounded shape teamed with a low centre front, and forgiveness of fit.

The growth in popularity of this style has created the need for some key continuity colours, Black and Pale Blush, so Lucie is always available to see you through from day to evening.



Inspired by a grunge aesthetic, Lucie demands attention this season in Rock 'n' Rose. A sultry yet sexy rose print on a black base, teamed with a black stretch lace that continues through to the back of the bra and co-ordinating briefs.





Kendra

We welcome brand new lace range Kendra, with 'love letter' lace angling down across the cups for a flattering look. Sweet and sexy, the Kendra lace is placed to give subtle modesty, for a Matilda look, with a little less transparency in the crucial areas.

Available in Black and Cherry.

**NEW
IN**



Cate

Back again for another season, we bring you your much-loved favourite, Cate. New colourway Willow is a soft green hue, perfect for autumn days approaching. Cate in Berry follows later in the season in a warm shade of red. Tried and trusted, Cate offers you shape, all-day comfort and that must-have uplift.

 **WILLOW (WIW)**
Fashion/Available:

 **BERRY (BEY)**
Fashion/Available:

 **ROSEWOOD (ROW)**
Continuity

 **BLACK (BLK)**
Continuity

 **HAZEL (HAL)**
Continuity

 **LATTE (LAE)**
Continuity

 **WHITE (WHE)**
Continuity



UW BRA • EL4030



- Three section cup plus side support panel for forward shape, uplift and separation
- Sheer embroidered top cup features a stylish intersecting arc design
- Embroidery has a special flattened finish to minimise show-through
- Elasticated neck edge for ease of fit
- Powernet wing for anchorage and support
- Bow detail at the centre front and apexes

UK	38-46 DD	34-46 E-HH	34-42 J-K
EU	85-105 E	75-105 F-L	75-95 M-O
FR	100-120 E	90-120 F-L	90-110 M-O
AUS/NZ	16-24 DD	12-24 E-HH	12-20 J-K
US	38-46 DD	34-46 DDD-L	34-42 M-O
JP	85-105 F	75-105 G-M	75-95 N-P

PRICE _____



NON WIRED BRA • EL4033



- Three section cup plus side support panel for forward shape, uplift and separation
- Smooth satin simplex bottom cup for extra support
- Sheer embroidered top cup features a stylish intersecting arc design
- Embroidery has a special flattened finish to minimise show-through
- Flexible side boning enhances anchorage and support
- Wide elastic underband with V-shaped centre front helps prevent rolling
- Powernet wing for anchorage and support
- Restricted stretch straps designed with a centre pull to give the bust a firm and even lift
- Bow detail at the centre front and apexes

UK	40-48 B-C	38-48 D-DD	36-48 E-G
EU	90-110 B-C	85-110 D-E	80-110 F-I
FR	105-125 B-C	100-125 D-E	95-125 F-I
AUS/NZ	18-26 B-C	16-26 D-DD	14-26 E-G
US	40-48 B-C	38-48 D-DD	36-48 DDD-I
JP	90-110 C-D	85-110 E-F	80-110 G-J

PRICE _____



BRIEF • EL4035



- Cut from smooth nylon elastane stretch fabric with a subtle sheen
- Sheer embroidery panels at front leg
- Bow detail at the centre front

M-4XL

PRICE _____

FULL BRIEF • EL4036



- Higher rise coverage at the waist
- Cut from smooth nylon elastane stretch fabric with a subtle sheen
- Sheer embroidery panel at front waist

M-4XL

PRICE _____



SKIN TONE STORY

Aside from the new colourways for the season, there is so much more that the Cate collection has to offer.

Cate is all about being inclusive, and we're not just talking about bra sizes and body shapes.

Cate is available to buy in five continuity colours that have been designed to suit a range of skin tones.

We know one shade of nude does not fit all, so be sure to meet your match with Cate for AW23, if you haven't already!



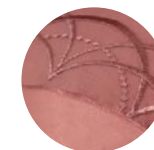
WHITE



LATTE



HAZEL



ROSEWOOD



BLACK

Morgan

Elomi's signature print collection, Morgan, is available for AW23 in an all-over abstract watercolour flower print. Warm earthy tones rest on a black ground, while black lace accents complete the look. Morgan is also available this season in our non-printed version, in Blackberry. A deep wine colour perfect for autumn, this colourway merchandises with so many of Elomi's exciting new releases for the season.

PRINTS



WATERCOLOUR (WCR) Fashion/Available:



CAMEO ROSE (CRO) Continuity



WHITE (WHE) Continuity



EBONY (EBY) Continuity



TOASTED ALMOND (TOD) Continuity

PLAINS



BLACKBERRY (BLY) Fashion/Available:



BALLET PINK (BAK) Continuity



HAUTE RED (HAD) Continuity



BLACK (BLK) Continuity



SAHARA (SAH) Continuity



Close up of new Watercolour print



UW BRA • EL4110



- Banded underwire bra with three section cup plus side support panel for a forward shape
- Top cup cut from a powerful stretch lace to give a beautifully rounded shape
- Elasticated neck edge for ease of fit
- Bow detail at centre front and apexes
- Gold charm at centre front – on Watercolour only
- Some colourways feature a printed strap and/or wing overlay for a co-ordinated look.

UK	36-46 DD	36-44 E-FF	34-44 G	32-42 GG-HH	32-40 J-K
EU	80-105 E	80-100 F-H	75-100 I	70-95 J-L	70-90 M-O
FR	95-120 E	95-115 F-H	90-115 I	85-110 J-L	85-105 M-O
AUS/NZ	14-24 DD	14-22 E-FF	12-22 G	10-20 GG-HH	10-18 J-K
US	36-46 DD	36-44 DDD-H	34-44 I	32-42 J-L	32-40 M-O
JP	80-105 F	80-100 G-I	75-100 J	70-95 K-M	70-90 N-P

PRICE _____

FULL BRIEF • EL4116



- Fuller coverage brief shape
- Fully printed matte nylon elastane fabric
- Stretch lace panels at side front
- Bow detail at the centre front

M-4XL

PRICE _____

Print



BRIEF • EL4115



- Fully printed matte nylon elastane fabric
- Stretch lace panels at side front
- Bow detail at the centre front



S-3XL



S-4XL



M-4XL

PRICE _____



UW BRA • EL4111



- Morgan in plain non-printed fabric uses the same fabric and shape as Morgan printed styles
- Banded underwire bra with three section cup plus side support panel for a forward shape
- Top cup cut from a powerful stretch lace to give a beautifully rounded shape
- Elasticated neck edge for ease of fit
- Bow detail at the centre front and apexes

UK	36-46 DD	36-44 E-FF	34-44 G	32-42 GG-HH	32-40 J-K
EU	80-105 E	80-100 F-H	75-100 I	70-95 J-L	70-90 M-O
FR	95-120 E	95-115 F-H	90-115 I	85-110 J-L	85-105 M-O
AUS/NZ	14-24 DD	14-22 E-FF	12-22 G	10-20 GG-HH	10-18 J-K
US	36-46 DD	36-44 DDD-H	34-44 I	32-42 J-L	32-40 M-O
JP	80-105 F	80-100 G-I	75-100 J	70-95 K-M	70-90 N-P

PRICE _____

Plain

Matilda

No season would be complete without the return of Matilda and for AW23 we bring you two new exciting colourways. Firstly, we have our limited edition, hyper-pink Wild Cherry, featuring a kitsch cherry and floral embroidery guaranteed to make you smile! Following later, we have Siren Song with our original Matilda embroidery design in mermaid inspired shimmering aqua and petrol blues on a deep navy tulle.



WILD CHERRY (WIY)
Fashion/Available:



SIREN SONG (SSG)
Fashion/Available:



PEARL BLUSH (PLH)
Continuity



CLOVE (CVE)
Limited Continuity



BLACK (BLK)
Continuity



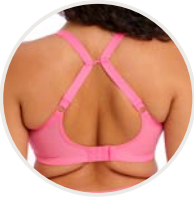
CAFÉ AU LAIT (CAT)
Continuity



ROSE (ROE)
Continuity



WHITE (WHE)
Continuity



J Hook



Close up of shimmer embroidery on new Siren Song

UW PLUNGE BRA • EL8900



- Low centre front gives plunge without push up
- Three section cup plus side support panel for forward shape, uplift and separation
- Elasticated neck edge for ease of fit
- Flexible back sweep construction allows easier adjustment to racer back with moveable J Hook
- Subtle shimmer embroidery yarn (SSG only)
- Metal ring detail at apexes

UK	36-46 DD	36-44 E-FF	34-44 G	32-42 GG-HH	32-40 J-K
EU	80-105 E	80-100 F-H	75-100 I	70-95 J-L	70-90 M-O
FR	95-120 E	95-115 F-H	90-115 I	85-110 J-L	85-105 M-O
AUS/NZ	14-24 DD	14-22 E-FF	12-22 G	10-20 GG-HH	10-18 J-K
US	36-46 DD	36-44 DDD-H	34-44 I	32-42 J-L	32-40 M-O
JP	80-105 F	80-100 G-I	75-100 J	70-95 K-M	70-90 N-P

PRICE _____



BRIEF • EL8905



- Sexy sheer back and sides
- Cotton lined front, with stretch mesh side panels
- Sheer inserts with embroidery detail at front waist

S-4XL

PRICE _____



FULL BRIEF • EL8906



- Sexy sheer backed fuller coverage brief
- Cotton lined front, with stretch mesh side panels
- Sheer inserts with embroidery detail at front

M-4XL

PRICE _____



THONG • EL8907



- Sexy sheer backed thong
- Cotton lined front for modesty
- Sheer inserts with embroidery detail at front

S-3XL

PRICE _____

Namrah

Namrah, our leopard embroidered range, is back for AW23 in two all-important continuity shades. Available in Pale Blush and Jet, Namrah is soon to be your new everyday favourite. Supersoft foldover elastic at the bottom edge of the gore and wing means you won't want to take this one off.



JET (JET)
New Continuity/Available:



PALE BLUSH (PAU)
New Continuity/Available:



UW BANDLESS PLUNGE BRA • EL301336



- Based on the Matilda EL8900 UW Plunge Bra frame, but developed into a bandless style
- Bandless styling has no fabric under the cup, preventing roll-up
- Top cup embroidery features a leopard spot design
- Elasticated neck edge for ease of fit
- Soft foldover elastic overlay on the bottom edge of underband and centre gore for all-day comfort
- Rose gold metal apex rings
- Bow with metal ring detail at centre front

UK	36-44 E-FF	34-44 G	32-42 GG-HH	32-40 J-K
EU	80-100 F-H	75-100 I	70-95 J-L	70-90 M-O
FR	95-115 F-H	90-115 I	85-110 J-L	85-105 M-O
AUS/NZ	14-22 E-FF	12-22 G	10-20 GG-HH	10-18 J-K
US	36-44 DDD-H	34-44 I	32-42 J-L	32-40 M-O
JP	80-100 G-I	75-100 J	70-95 K-M	70-90 N-P

PRICE _____



HIGH LEG BRIEF • EL301353



- Embroidery detail at front
- Front and back are cut from double layered stretch mesh for a light look with modesty

M-4XL

PRICE _____

Charley

Feel confident in a great fit you can trust with Charley. We love the diamond mesh embellishment with a delicate floral embroidery. New colourway Petrol is inspired by the ripple of Northern Lights across an Arctic midnight sky, with tonal shades of green and blue, highlighted with soft metallic embroidery. With a whole host of styles available, as well as existing continuity colours, you're guaranteed to find your perfect fit.

PETROL (PEO)
Fashion/Available:

STORM (STM)
Limited Continuity

BALLET PINK (BAK)
Continuity

BLACK (BLK)
Continuity

FAWN (FAN)
Continuity

JET (JET)
Continuity

BASED ON
Matilda



J Hook

UW PLUNGE BRA · EL4380



- Based on the Matilda EL8900 UW Plunge Bra
- Low centre front gives plunge without push up
- Three section cup plus side support panel for forward shape, uplift and separation
- Top cup embroidery features a delicate floral design
- Flexible back sweep construction allows easier adjustment to racer back with moveable J hook
- Bow detail at the centre front and apexes

UK	36-46 DD	36-44 E-FF	34-44 G	32-42 GG-HH	32-40 J-JJ
EU	80-105 E	80-100 F-H	75-100 I	70-95 J-L	70-90 M-N
FR	95-120 E	95-115 F-H	90-115 I	85-110 J-L	85-105 M-N
AUS/NZ	14-24 DD	14-22 E-FF	12-22 G	10-20 GG-HH	10-18 J-JJ
US	36-46 DD	36-44 DDD-H	34-44 I	32-42 J-L	32-40 M-N
JP	80-105 F	80-100 G-I	75-100 J	70-95 K-M	70-90 N-O

PRICE _____



J Hook

UW PLUNGE BRA - STRETCH · EL4382



- Low centre front gives plunge without push up
- Banded underwire bra with three section cup plus side support panel for a forward shape
- Top cup cut from a powerful stretch lace for a rounded shape and ease of fit
- Centre front lace detail
- Flexible back sweep construction allows easier adjustment to racer back with moveable J hook
- Bow detail at the centre front and apexes

UK	36-46 D-DD	36-44 E-FF	34-44 G	32-42 GG-HH	32-40 J-JJ
EU	80-105 D-E	80-100 F-H	75-100 I	70-95 J-L	70-90 M-N
FR	95-120 D-E	95-115 F-H	90-115 I	85-110 J-L	85-105 M-N
AUS/NZ	14-24 D-DD	14-22 E-FF	12-22 G	10-20 GG-HH	10-18 J-JJ
US	36-46 D-DD	36-44 DDD-H	34-44 I	32-42 J-L	32-40 M-N
JP	80-105 E-F	80-100 G-I	75-100 J	70-95 K-M	70-90 N-O

PRICE _____



UW MOULDED SPACER BRA • EL4383



- Ultra-light seamless spacer fabric is breathable and comfortable while offering good support
- Seamless cup offers a beautifully rounded smooth profile
- Bandless frame has less fabric under the cups and works well for shorter upper torsos
- Concealed side support panel minimises sideways bulge and is cut from satin simplex, with shiny side towards the skin for a silky soft feel
- Side support panel features a stretch lace overlay
- Diamond mesh centre front with cutout detail for a lighter look
- Centre front has a smooth edged elastic at the lower edge for comfort
- Stretch neck edge for ease of fit
- Bow detail at the centre front and apexes

UK	36-46 DD-FF	34-44 G-GG	34-42 H	34-40 HH
EU	80-105 E-H	75-100 I-J	75-95 K	75-90 L
FR	95-120 E-H	90-115 I-J	90-110 K	90-105 L
AUS/NZ	14-24 DD-FF	12-22 G-GG	12-20 H	12-18 HH
US	36-46 DD-H	34-44 I-J	34-42 K	34-40 L
JP	80-105 F-I	75-100 J-K	75-95 L	75-90 M

PRICE _____



UW BRALETTE • EL4381



- Low centre front gives plunge without push up
- Banded underwire bra with three section cup plus side support panel for a forward shape
- Top cup cut from a powerful stretch lace for a rounded shape and ease of fit
- Stretch lace overlay on cradle and wing has no bones, but is cut loose to avoid rolling
- Bow detail at the centre front and apexes

UK	36-40 E-FF	34-40 G-H	34-38 HH
EU	80-90 F-H	75-90 I-K	75-85 L
FR	95-105 F-H	90-105 I-K	90-100 L
AUS/NZ	14-18 E-FF	12-18 G-H	12-16 HH
US	36-40 DDD-H	34-40 I-K	34-38 L
JP	80-90 G-I	75-90 J-L	75-85 M

PRICE _____



HIGH LEG BRIEF • EL4386



- Waist height brief with high cut leg
- Cotton lined diamond mesh front, with stretch lace side panels and stretch diamond mesh leg panels
- Back cut from diamond mesh fabric
- Bow detail at the centre front



M-4XL

PRICE _____

FULL BRIEF • EL4388



- Fuller coverage brief
- Cotton lined diamond mesh front, with embroidery side panels and stretch lace leg panels
- Back cut from diamond mesh fabric
- Bow detail at the centre front

M-4XL

PRICE _____

BRAZILIAN • EL4385



- Mid-rise brief shape
- Cotton lined diamond mesh front
- Stretch diamond mesh side front panels for a lighter look
- Back cut from stretch lace, with no leg elastic, for a smooth finish when worn
- Back features a cut-out detail
- Bow detail at the centre front

M-3XL

PRICE _____

Carrie



New for AW23, we introduce Carrie. Using precision print technology to create the multi-coloured floral embroidery, this collection draws inspiration from the rise of modern-day Regency looks and maximalism. The floral design is so punchy, it's almost life like! Available in Ballet Pink, all styles feature contrast black seam work.



BALLET PINK (BAK)
Fashion/Available:



UW PLUNGE BRA • EL301802



- Based on the Matilda EL8900 UW Plunge Bra
- Low centre front gives plunge without push up
- Multi-coloured embroidered top cup and centre gore
- Seams are finished with a soft, flat elastic in contrasting black for dramatic effect
- Soft fold-over elastic at the underarms for comfort
- Soft elastic at neck edge for ease of fit
- Bow detail at centre front and apexes

UK	36-46 DD	36-44 E-FF	34-44 G	32-42 GG-HH	32-40 J-K
EU	80-105 E	80-100 F-H	75-100 I	70-95 J-L	70-90 M-O
FR	95-120 E	95-115 F-H	90-115 I	85-110 J-L	85-105 M-O
AUS/NZ	14-24 DD	14-22 E-FF	12-22 G	10-20 GG-HH	10-18 J-K
US	36-46 DD	36-44 DDD-H	34-44 I	32-42 J-L	32-40 M-O
JP	80-105 F	80-100 G-I	75-100 J	70-95 K-M	70-90 N-P

PRICE _____



HIGH LEG BRIEF • EL301853



- Double layer stretch mesh front and back
- Multi-coloured embroidered side front panels
- Seams are finished with a soft, flat elastic in contrasting black for dramatic effect
- Keyhole detail at back waist
- Bow detail at front and back

S-4XL

PRICE _____



THONG • EL301870



- Double layer stretch mesh front and back
- Multi-coloured embroidered front panel
- Seams are finished with a soft, flat elastic in contrasting black for dramatic effect
- Keyhole detail at back waist
- Bow detail at front and back

S-3XL

PRICE _____

Kendra

New
FOR AW23

BASED ON
Matilda

Meet our new lace range for AW23, Kendra. The UW Plunge Bra features a soft stretch lace that runs over the cups for a luxurious look. Available in Black and Cherry, the collection debuts a new Thong shape, which features a keyhole cut out at the front and back, along with a sexy strapping detail around the waist. Kendra is serving drama and comfort – a winning combination.



CHERRY (CHR)
Fashion/Available:



BLACK (BLK)
New Continuity/Available:



UW PLUNGE BRA • EL301602



- Based on the Matilda EL8900 UW Plunge Bra
- Three section cup plus cotton-lined side-support panel for forward shape, good uplift and separation
- Unlined tulle top cup for a lighter look
- Cup is overlaid with a lightweight stretch lace, that angles towards the front for a flattering effect
- Soft fold-over elastic at the neckline for ease of fit
- Bow detail at centre front

UK	36-46 DD	36-44 E-FF	34-44 G	32-42 GG-HH	32-40 J-K
EU	80-105 E	80-100 F-H	75-100 I	70-95 J-L	70-90 M-O
FR	95-120 E	95-115 F-H	90-115 I	85-110 J-L	85-105 M-O
AUS/NZ	14-24 DD	14-22 E-FF	12-22 G	10-20 GG-HH	10-18 J-K
US	36-46 DD	36-44 DDD-H	34-44 I	32-42 J-L	32-40 M-O
JP	80-105 F	80-100 G-I	75-100 J	70-95 K-M	70-90 N-P

PRICE _____



FULL BRIEF • EL301651



- Fuller coverage brief
- Double layer stretch mesh front and back
- Front and back leg soft stretch lace panels minimise show-through under clothing
- Keyhole detail at front waist

S-4XL

PRICE _____



THONG • EL301670



- Double layer stretch mesh front
- Soft stretch lace leg panels minimise show-through under clothing
- Ring and keyhole detail at front and back
- Soft and stretchy fold-over elastic waist strapping detail

S-3XL

PRICE _____

Brianna

Brianna for autumn is available in a deep wine hue we're calling Blackberry. All your favourites from last season are available, from the UW Plunge Bra, with worn-to-be-seen strappy detailing, to the lacy Thong. Extend the Brianna merchandising story further by pairing with Morgan or Smooth this autumn/winter.



BLACKBERRY (BLY)
Fashion/Available:



LAPIS (LAS)
Limited Continuity



BLACK (BLK)
Continuity



WHITE (WHE)
Continuity



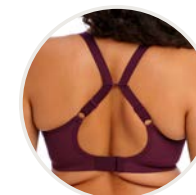
UW PLUNGE BRA • EL8080



- Based on the Matilda EL8900 UW Plunge Bra
- Low centre front gives plunge without push up
- Three section cup plus side panel for forward shape, good uplift and separation
- Unlined tulle top cup for a light and sexy look
- Cup is overlaid with flat lace which features a floral design in a mix of matte and shiny yarns
- Overlapping oval metal detail to cup apexes and centre front

UK	38-44 E	36-44 F-FF	34-44 G	32-42 GG-HH	32-40 J-K
EU	85-100 F	80-100 G-H	75-100 I	70-95 J-L	70-90 M-O
FR	100-115 F	95-115 G-H	90-115 I	85-110 J-L	85-105 M-O
AUS/NZ	16-22 E	14-22 F-FF	12-22 G	10-20 GG-HH	10-18 J-K
US	38-44 DDD	36-44 G-H	34-44 I	32-42 J-L	32-40 M-O
JP	85-100 G	80-100 H-I	75-100 J	70-95 K-M	70-90 N-P

PRICE _____



J Hook



UW PADDED HALF CUP BRA • EL8081



- Three section light foam liner has vertical seams for uplift, and is trimmed slightly lower at the neck edge for a light and sexy look
- Cup overlay is cut from rigid lace for support, teamed with a stretch lace top cup for ease of fit
- Centre gore is overlaid with scalloped edge lace for a luxurious look
- Flexible back sweep construction allows easier adjustment to racer back with moveable J hook
- Overlapping oval metal detail to cup apexes and centre front

UK	38-44 DD-E	36-44 F-FF	34-42 G	32-42 GG-H	32-40 HH
EU	85-100 E-F	80-100 G-H	75-95 I	70-95 J-K	70-90 L
FR	100-115 E-F	95-115 G-H	90-110 I	85-110 J-K	85-105 L
AUS/NZ	16-22 DD-E	14-22 F-FF	12-20 G	10-20 GG-H	10-18 HH
US	38-44 DD-DDD	36-44 G-H	34-42 I	32-42 J-K	32-40 L
JP	85-100 F-G	80-100 H-I	75-95 J	70-95 K-L	70-90 M

PRICE _____



FULL BRIEF • EL8085



- Fuller coverage brief
- Double layered stretch mesh front and back
- Sheer tulle side panels with stretch lace overlay pieces

M-4XL

PRICE _____



THONG • EL8087



- Stretch lace side front and back waist panels
- Front is cut from double layered stretch mesh for a light look with modesty

S-3XL

PRICE _____

Smooth

Experience all-day comfort with Smooth, designed for ease of wear and a smooth silhouette. The Full Brief is crafted from a sustainably sourced MicroModal® fabric making it both breathable and super soft. It's so much like a second skin, you might even forget your wearing it. Continuity colourways and additional styles available.



BLACKBERRY (BLY)
Fashion/Available:



CLOVE (CVE)
Limited Continuity



BALLET PINK (BAK)
Continuity



HAUTE RED (HAD)
Continuity



WHITE (WHE)
Continuity



BLACK (BLK)
Continuity



SAHARA (SAH)
Continuity



FULL BRIEF - EL4565



- Fuller coverage brief shape
- Cut from a fabric which is a blend of Tencel™ Modal and elastane
- Super soft Tencel™ Modal is breathable and comfortable to wear
- The fabric and elastic trim are very stretchy, which allows this garment to be dual-sized
- Tencel™ Modal is a sustainable fibre that derives from renewable wood sources
- Special flat sewing technique with extra soft thread is used on seams and to attach the elastic, to minimise show-through under clothing
- Cotton lined gusset

S, M/L, XL/2XL, 3XL/4XL

PRICE _____

WHAT IS TENCEL?

TENCEL™ Modal Micro Air is a sustainable fibre that is derived from natural wood sources. This flexible fibre is renowned for its exceptional softness.

Composed of natural material, all TENCEL™ standard Modal fibres are biodegradable and compostable under industrial, home, soil and marine conditions, thus they can fully revert back to nature.

Exhibiting high flexibility, TENCEL™ Modal wood-based fibres offer textiles a long-lasting quality of exquisite softness. Owing to the fibre's sleek crosssection, TENCEL™ Modal fibres enhance the soft touch of fabrics even after repeated washing.





UW MOULDED STRAPLESS BRA - EL4300



- Foam moulded cup with matte simplex overlay gives firm support
- Cup shape has been specially developed to give a forward and rounded cup shape, without digging in at the neckline
- Cups have a sweetheart neckline, dipping at the centre front for a flattering shape
- Removable multiway straps feature a specially developed “slide and lock” hook which keeps straps securely in place
- Flexi-bones at the back support without digging in, flipping or rolling
- Elastic at the top of the back and underband feature patented *Stay4Sure* silicone coating, which helps prevent slipping, and is kind to the skin
- The cup has two strap connecting locations to allow a choice of wearing position
- Three or four rows of wider spaced hook and eye, dependent on size
- Bow with rose gold metal pinwheel charm at the centre front

UK	40-44 DD	38-44 E-F	36-44 FF	34-42 G	32-40 GG-HH	32-38 J
EU	90-100 E	85-100 F-G	80-100 H	75-95 I	70-90 J-L	70-85 M
FR	105-115 E	100-115 F-G	95-115 H	90-110 I	85-110 J-L	85-100 M
AUS/NZ	18-22 DD	16-22 E-F	14-22 FF	12-20 G	10-20 GG-HH	10-16 J
US	40-44 DD	38-44 DDD-G	36-44 H	34-42 I	32-42 J-L	32-38 M
JP	90-100 F	85-100 G-H	80-100 I	75-95 J	70-95 K-M	70-85 N

PRICE _____



UW MOULDED NON PADDED BRA - EL4301



- Non-stretch moulded cup made from unlined and ultra-light Aerocool fabric to keep you cool and dry
- Non-stretch tulle in the top is lightly lined for support
- Fold-over elastic at the underarm and neck edge for comfort
- Underband elastic is wrapped in a soft edged fold-over elastic for comfort
- Tall back with fold-over elastic at the edges for a smoothing effect
- Narrow set back straps to minimise strap slippage
- Bow with rose gold metal pinwheel charm at the centre front

UK	40-48 DD	38-48 E	36-46 F	36-44 FF	34-42 G	32-40 GG	32-38 H	32-36 HH	32-34 J
EU	90-110 E	85-110 F	80-105 G	80-100 H	75-95 I	70-90 J	70-85 K	70-80 L	70-75 M
FR	105-125 E	100-125 F	95-120 G	95-115 H	90-110 I	85-105 J	85-100 K	85-95 L	85-90 M
AUS/NZ	18-26 DD	16-26 E	14-24 F	14-22 FF	12-20 G	10-18 GG	10-16 H	10-14 HH	10-12 J
US	40-48 DD	38-48 DDD	36-46 G	36-44 H	34-42 I	32-40 J	32-38 K	32-36 L	32-34 M
JP	90-110 F	85-110 G	80-105 H	80-100 I	75-95 J	70-90 K	70-85 L	70-80 M	70-75 N

PRICE _____

Sachi

Sachi returns for AW23, and she's in a party mood! Featuring an embroidered heart design in shades of vibrant pink on a cherry red base, Red Confetti is a real showstopper. The UW Plunge Bra has a three section cup, plus side panel for forward shape, uplift and separation. Support and style combined – what's not to love?



RED CONFETTI (REI)
Fashion/Available:



BLACK (BLK)
Continuity



Close up of embroidery on new Red Confetti



UW PLUNGE BRA • EL4353 / EL4350



- Based on the Matilda frame
- Low centre front gives plunge without push up
- Three section cup plus side panel for forward shape, good uplift and separation
- Features a small nylon coated metal ring and bold strappy detailing at the front
- Cotton lined side panel for a soft finish next to the skin
- EL4353 available in REI only. EL4350 available in BLK

UK	36-46 DD	36-44 E-FF	34-44 G	32-42 GG-HH	32-40 J-JJ
EU	80-105 E	80-100 F-H	75-100 I	70-95 J-L	70-90 M-N
FR	95-120 E	95-115 F-H	90-115 I	85-110 J-L	85-105 M-N
AUS/NZ	14-24 DD	14-22 E-FF	12-22 G	10-20 GG-HH	10-18 J-JJ
US	36-46 DD	36-44 DDD-H	34-44 I	32-42 J-L	32-40 M-N
JP	80-105 F	80-100 G-I	75-100 J	70-95 K-M	70-90 N-O

PRICE _____

FULL BRIEF • EL4354 / EL4358



- Double layered stretch mesh front and back
- Side front embroidered panels
- EL4354 available in REI only. EL4358 available in BLK



S-4XL



M-4XL

PRICE _____



THONG • EL4357



- Double layered stretch mesh front
- Side front embroidered panels
- Soft and stretchy fold-over elastic creates a cheeky strappy string back

S-3XL

PRICE _____



BRIEF • EL4355



- Sexy sheer backed brief
- Sheer mesh panels at front leg
- Cotton jersey lined front for modesty
- Small cut-out detail at front and back waist with ring detail to front

M-4XL

PRICE _____



UW BABYDOLL • EL4351



- Three section cup plus side panel for forward shape, good uplift and separation
- Features a small nylon coated metal ring and bold strappy detailing at the front
- Cotton lined side cup panel for a soft finish next to the skin
- Stretch mesh front and back skirt cut to a mid-thigh length
- Hook and eye fastening with a keyhole cut out detail at the back for ease of wear
- Can be worn under a dress to make the dress hang well, and prevent the dress from clinging

UK	36-44 E-FF	34-42 G-H
EU	80-100 F-H	75-95 I-K
FR	95-115 F-H	90-110 I-K
AUS/NZ	14-22 E-FF	12-20 G-H
US	36-44 DDD-H	34-42 I-K
JP	80-100 G-I	75-95 J-L

PRICE _____

Lucie

Lucie is a tale of two halves for AW23, with the launch of two new print designs. Rock 'n' Rose is inspired by the revival of grunge aesthetic, and features a photographic rose print on a black ground. Lucie's alternative offering is a subtle ditsy print scattered across both a Pale Blush and Black base; a design perfect for everyday wear. All styles feature a soft stretch lace complete with scallop edge detailing.



ROCK 'N' ROSE (ROK)
Fashion/Available:



BLACK (BLK)
New Continuity/Available:



PALE BLUSH (PAU)
New Continuity/Available:



UW PLUNGE BRA - STRETCH • EL4490



- Banded underwired plunge bra with three section printed cups plus side support panel for forward shape
- Low centre front gives plunge without push up
- Top cup cut from a powerful stretch lace for a rounded shape and ease of fit
- Neck edge has no elastic, for a smooth finish when worn
- Back cut from printed stretch fabric overlaid onto powernet, to give anchorage and support
- Fully enclosed narrower underband elastic to minimise rolling
- Printed strap overlay for a co-ordinated look

UK	36-46 D-DD	36-44 E-FF	34-44 G	32-42 GG-JJ
EU	80-105 D-E	80-100 F-H	75-100 I	70-95 J-N
FR	95-120 D-E	95-115 F-H	90-115 I	85-110 J-N
AUS/NZ	14-24 D-DD	14-22 E-FF	12-22 G	10-20 GG-JJ
US	36-46 D-DD	36-44 DDD-H	34-44 I	32-42 J-N
JP	80-105 E-F	80-100 G-I	75-100 J	70-95 K-O

PRICE _____



BRAZILIAN • EL4495



- Mid-rise brief shape
- Printed front cut from soft stretch polyester
- Stretch lace panels at side waist and back

M-4XL

PRICE _____



HIGH LEG BRIEF • EL4496



- Based on the Charley EL4386 High Leg Brief
- Waist height brief with high cut leg
- Printed front panel cut from soft stretch polyester
- Stretch lace panels at side front
- Back cut from stretch leopard lace

M-4XL

PRICE _____

Priya

Inject a little glamour into your lingerie drawer with Priya. Available in Storm for AW23, soft shimmering metallic yarns trickle through the slate grey designs, to provide a subtle iridescent finish. Embodying all things glamour, we love the embroidered motif at the centre front of the UW Plunge Bra for a decorative underbust tattoo look. All styles are complete with crystal jewel droplets.



STORM (STM)
Fashion/Available:



VANILLA (VAA)
Limited Continuity



ROSEGOLD (ROD)
Continuity



BLACK (BLK)
Continuity



UW PLUNGE BRA • EL4550



- Based on the Matilda EL8900 UW Plunge Bra
- Low centre front gives plunge without push up
- Three section cup plus cotton lined side-support panel for forward shape, good uplift and separation
- Unlined tulle top cup
- Cup is overlaid with a beautiful embroidery, that angles towards the front for a flattering look
- Soft fold-over elastic at the neckline for ease of fit
- Soft fold-over elastic at the top edge of the back for a smoothing effect
- Embroidered motif at the centre front for a decorative underbust tattoo look
- Rose gold central jewel and apex details

UK	36-44 E-FF	34-44 G	32-42 GG-HH	32-40 J-K
EU	80-100 F-H	75-100 I	70-95 J-L	70-90 M-O
FR	95-115 F-H	90-115 I	85-110 J-L	85-105 M-O
AUS/NZ	14-22 E-FF	12-22 G	10-20 GG-HH	10-18 J-K
US	36-44 DDD-H	34-44 I	32-42 J-L	32-40 M-O
JP	80-100 G-I	75-100 J	70-95 K-M	70-90 N-P

PRICE _____



FULL BRIEF • EL4555



- Fuller coverage brief
- Double stretch mesh front
- Folded edge back leg panel for a smooth no-show leg edge
- Diagonal back seam creates shaping to allow the back leg edge to anchor and not ride up
- Diagonal back seam is sewn with a special flat technique with extra soft thread to minimise show-through
- Cutout detail at back waist
- Rose gold jewel detail at centre front

M-4XL

PRICE _____



BRAZILIAN • EL4557



- Cheeky back coverage and lower rise at the waist
- Double layered stretch mesh front
- Folded edge back leg panel for a smooth no-show leg edge
- Cutout detail at back waist
- Rose gold jewel detail at centre front

M-4XL

PRICE _____



UW BABYDOLL • EL4551



- Low centre front gives plunge without push up
- Three section cup plus cotton lined side-support panel for forward shape, good uplift and separation
- Unlined tulle top cup
- Cup is overlaid with a beautiful embroidery, that angles towards the front for a flattering look
- Stretch mesh skirt with a circular frill at the bottom edge, is cut to finish at mid-thigh
- Hook and eye fastening with keyhole detail at centre back makes it easier to put the garment on
- Can be worn under a dress to make the dress hang well, and prevent the dress from clinging

UK	36-42 E-FF	34-42 G	32-42 GG-HH
EU	80-95 F-H	75-95 I	70-95 J-L
FR	95-110 F-H	90-110 I	85-110 J-L
AUS/NZ	14-20 E-FF	12-20 G	10-20 GG-HH
US	36-42 DDD-H	34-42 I	32-42 J-L
JP	80-95 G-I	75-95 J	70-95 K-M

PRICE _____

Energise

Energise is set to put you through the paces for AW23 with a new seasonal print. Stormy Haze is an abstract paint design, which sees tones of smoky blue, charcoal grey and black combine. The only workout partner you need, the UW Sports Bra features a four-section cup that offers not only all the support you need, but bust separation and shaping too, from its innovative non-compression design. Continuity colours available.



STORMY HAZE (SRM)
Fashion/Available:



BLACK (BLK)
Continuity



NAVY (NAV)
Continuity



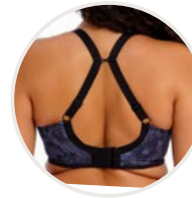
NAVY GEO (NAO)
Continuity



NUDE (NUE)
Continuity



WHITE (WHE)
Continuity



J Hook

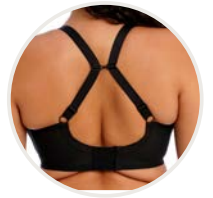
UW SPORTS BRA • EL8042



- Three section cup plus side support panel
- Unique non-compression design offering bust separation, shaping and the ultimate in support
- The cup fabric is finished with FERAN® ICE which improves moisture wicking properties of the fabric to keep you cool and dry
- FERAN® ICE finish on the fabric ensures stains are easily washed out to prolong the life of the garment
- Cups, cradle and back feature a print that camouflages the seams for a sporty crop top look
- Restricted stretch straps offer comfortable support
- Moveable J Hook allows adjustment to racer back

UK	38-46 D	36-46 DD	36-44 E-FF	34-44 G	32-44 GG	32-42 H	32-40 HH-J	34-38 JJ-K
EU	85-105 D	80-105 E	80-100 F-H	75-100 I	70-100 J	70-95 K	70-90 L-M	75-85 N-O
FR	100-120 D	95-120 E	95-115 F-H	90-115 I	85-115 J	85-110 K	85-105 L-M	90-100 N-O
AUS/NZ	16-24 D	14-24 DD	14-22 E-FF	12-22 G	10-22 GG	10-20 H	10-18 HH-J	12-16 JJ-K
US	38-46 D	36-46 DD	36-44 DDD-H	34-44 I	32-44 J	32-42 K	32-40 L-M	34-38 N-O
JP	85-105 E	80-105 F	80-100 G-I	75-100 J	70-100 K	70-95 L	70-90 M-N	75-85 O-P

PRICE _____



J Hook

UW SPORTS BRA • EL8041

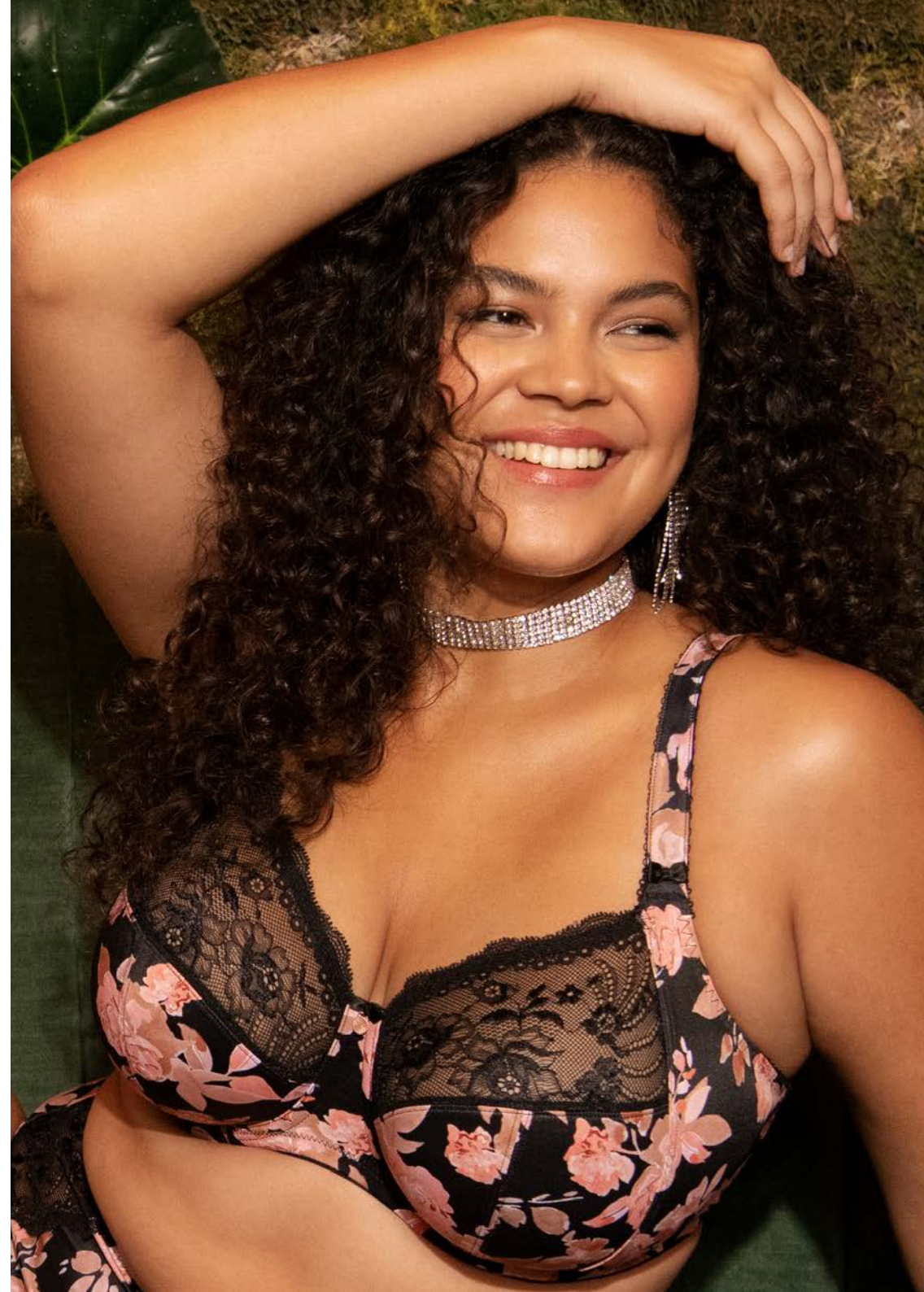


- Three section cup plus side support panel
- Unique non-compression design offering bust separation, shaping and the ultimate in support
- The cup fabric has a special finish, which improves moisture wicking properties of the fabric to keep you cool and dry
- The moisture-management finish on the fabric ensures stains are easily washed out, to prolong the life of the garment
- Microfibre-backed restricted stretch straps offer comfortable support
- Moveable J Hook allows adjustment to racer back

CONTINUITY

FUN.
FIERCE.

Fabulous.



Bijou

Bijou's Moulded Bra offers a seamless rounded shape and a low centre front for a beautiful plunge shape without the push up. Available in Lapis, Black and Sand, make this one of your Elomi essentials.



UW MOULDED T-SHIRT BRA • EL8722



UK	36-44 E	34-44 F-G	34-42 GG-H
EU	80-100 F	75-100 G-I	75-95 J-K
US	36-44 DDD	34-44 G-I	34-42 J-K

- LAPIS (LAS)
Limited Continuity

BLACK (BLK)
Continuity

SAND (SAD)
Continuity

Downtime

Relax in Downtime. Our Non-Wired Bralette and co-ordinating Short feature soft touch Modal fabric for all day comfort. In 'goes-with-everything' Grey Marl, you'll want to be wearing this set throughout the day and night!



NON-WIRED BRALETTE • EL301417



UK	36-44 F/FF	34-44 G/GG	32-42 H/HH	32-42 J/JJ
EU	80-100 G/H	75-100 I/J	70-95 K/L	70-95 M/N
US	36-44 G/H	34-44 I/J	32-42 K/L	32-42 M/N



SHORT • EL301480



M-4XL

- GREY MARL (GYL)
Continuity

Kelsey

Worn to be seen lingerie will always be a trend we support! Cut from a powerful stretch lace, inside contains a frame based on best selling Matilda, for ultimate support without comprising on style. Available in Black, pair this under your favourite blazer for a chic night out look.



UW BRALETTE • EL300524

UK	38-44 E	36-44 F-FF	34-44 G	32-42 GG-HH	32-40 J-JJ
EU	85-100 F	80-100 G-H	75-100 I	70-95 J-L	70-90 M-N
US	38-44 DDD	36-44 G-H	34-44 I	32-42 J-L	32-40 M-N



HIGH LEG BRIEF • EL300553

M-4XL



BLACK (BLK)
Continuity

Molly

Here to support you while you are nursing is Molly. Available up to a KK cup, design details include a full circle sling for support while feeding, a nursing clasp at the apex which is easy to release and fasten with one hand, and FERAN® ICE fabric technology that wicks moisture away to keep you cool and dry. We recommend the use of nursing pads with this bra due to the wicking properties of the fabric.



UW NURSING BRA • EL4542

UK	36-44 F-FF	34-44 G	32-44 GG-HH	32-42 J-KK
EU	80-100 G-H	75-100 I	70-100 J-L	70-95 M-P
US	36-44 G-H	34-44 I	32-44 J-L	32-42 M-P



CAMEO ROSE (CRO)
Continuity



BLACK (BLK)
Continuity



BLUSH (BLH)
Continuity



Based on Matilda but with a playful twist – we love the peek-a-boo styling on the UW Plunge Bra. With comfortable stretch mesh and soft elastics, think of Kintai as elevated everyday essentials.



UW PLUNGE BRA • EL301202

UK	38-44 E	36-44 F-FF	34-44 G	32-42 GG-HH	32-40 J-JJ
EU	85-100 F	80-100 G-H	75-100 I	70-95 J-L	70-90 M-N
US	38-44 DDD	36-44 G-H	34-44 I	32-42 J-L	32-40 M-N



FULL BRIEF • EL301251

M-4XL



BLACK (BLK)
Continuity



UW BRA • EL301205

UK	36-44 F-FF	34-44 G	32-42 GG-HH	32-40 J-K
EU	80-100 G-H	75-100 I	70-95 J-L	70-90 M-O
US	36-44 G-H	34-44 I	32-42 J-L	32-40 M-O



THONG • EL301270

M-3XL

Our POS

Point of sale pieces are a great way to bring attention to new collections in your store.

This season, to support you, our retail partners, we'll be sending out a selection of showcards and banners as pictured below. All POS items will be sent out automatically, collection at a time, and will arrive with the product ordered on the month of launch.

In order to receive any of our seasonal POS items you must order 10+ units of the key style as per the picture and style code below. For example the Matilda Banner features EL8900 and matching co-ordinate EL8907 but the key style piece is the EL8900 Bra which would require a minimum order of 10 pieces to receive the POS.

SHOWCARD



Kendra (BLK) & (CHR)
EL301602



Morgan (WCR)
EL4110



Sachi (REI)
EL4353



Matilda (SSG)
EL8900

BANNER



Matilda (WIY)
EL8900



Charley (PEO)
EL4380

SIZES WITHOUT SURPRISES

Missing sizes without surprises?

Rest assured, our handy conversion charts, designed to help you find the right bra and brief size wherever you may be in the world, haven't disappeared. Simply scan the QR code below to digitally access Elomi Lingerie's international size guide.



Please note: Banner Size: 700mm x 495mm. Showcard size: 420mm x 297mm. POS is subject to change.

UK, IRELAND AND REST OF THE WORLD

Wacoal EMEA Ltd. The Corsetry Factory, Rothwell Road,
Desborough, Northamptonshire, NN14 2PG, UK
Tel: +44 (0) 1536 760282 Fax: +44 (0) 1536 762149
Email: orders@wacoal-europe.com

WACOAL EUROPE SAS (PARIS)

81 rue Saint-Lazare, 75009 Paris, France
Tel: +33 (0) 1 42 81 04 93

WACOAL EUROPE SAS (LYON)

4, Allée Du Moulin Berger 69130 Ecully, Lyon, France
Tel: +33 (0) 4 37 59 80 37 Fax: +33 (0) 4 78 35 34 83

EVEDEN INC.

136 Madison Avenue, Floor 9, New York, NY 10016, USA
US Showroom Tel: (212) 696-4763 Fax: (800) 708-8933
USA Customer Service Toll Free: (800) 467-1269 Fax: (866) 533-1385
Email: usaorders@eveden.com

EVEDEN CANADA

Accounts Office: 136 Madison Avenue, Floor 9, New York, NY 10016, USA
US Showroom Tel: (212) 696-4763 Fax: (800) 708-8933
Canada Customer Service Toll Free: (800) 467-1269 Fax: (866) 533-1385
Email: ca.orders@eveden.com

CARIBBEAN AND LATIN AMERICA

Accounts Office: 136 Madison Avenue, Floor 9, New York, NY 10016, USA
US Showroom Tel: (212) 696-4763 Fax: (800) 708-8933
USA Customer Service Toll Free: (800) 467-1269 Fax: (866) 533-1385
Email: usaorders@eveden.com

WACOAL AUSTRALIA PTY LTD.

249 Brunswick Road, Brunswick, Victoria 3056
Tel: +61 3 9326 0318
Email: australia.enquiries@wacoal-europe.com /
australian.orders@wacoal-europe.com

NEW ZEALAND

Rich Pickings: Kathleen Ritchie
Tel/Fax: 0064 9 411 9174
Email: mail@richpickings.co.nz



WACOAL-EUROPE.COM



ELOMI.COM